

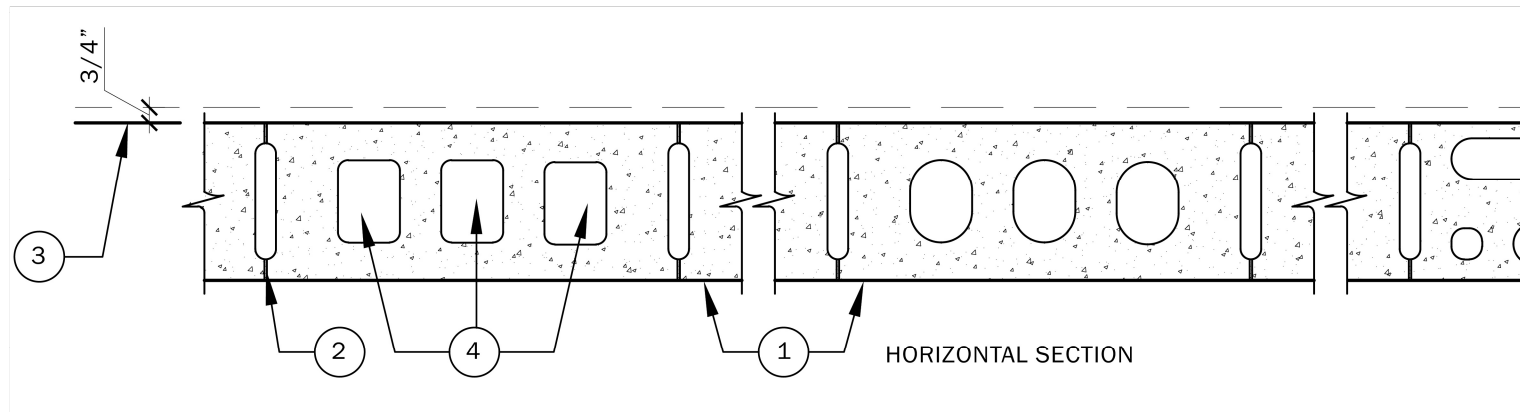
UL FIRE RATED

Design No. U905



Bearing Wall Rating - 2 HR.

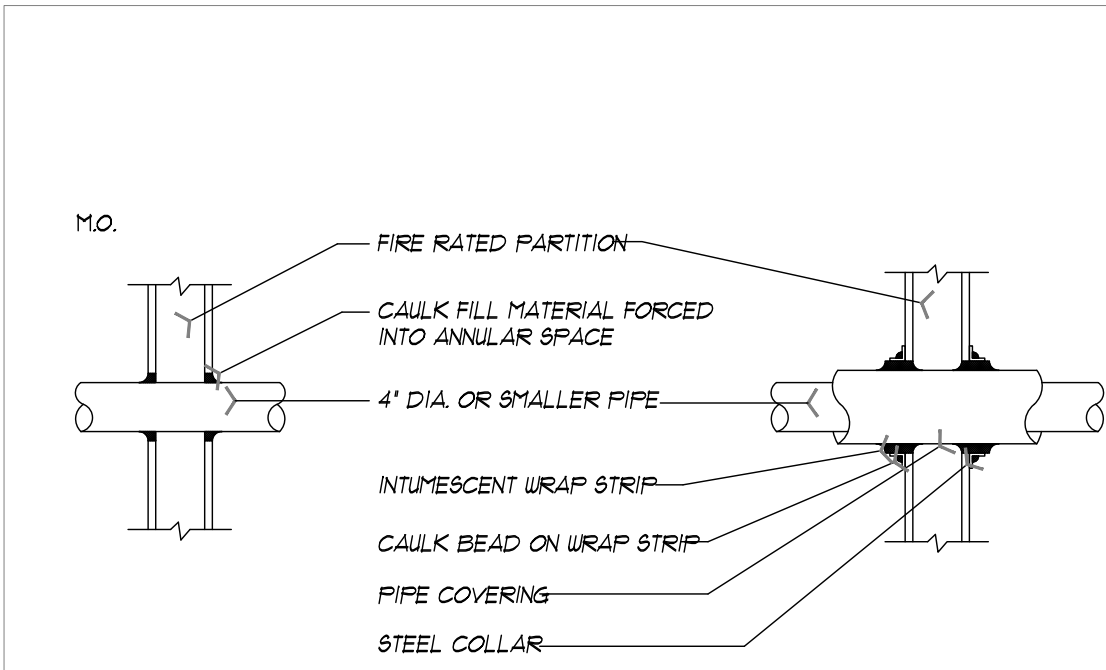
Nonbearing Wall Rating - 2 HR.



1. Concrete Blocks* - Various designs. Classificaon D-2 (2 hr).
2. Mortar - Blocks laid in full bed of mortar, nom. 3/8 in. thick, of not less than 2-1/4 and not more than 3-1/2 parts of clean sharp sand to 1 part Portland cement (proportioned by volume) and not more than 50 percent hydrated lime (by cement volume). Vertical joints staggered.
3. Portland Cement Stucco or Gypsum Plaster - If used, add 1/2 hr. to Classification. Where combustible members are framed in wall, plaster or stucco must be applied on teh face opposite framing to achieve a max. Classification of 1-1/2 hr. Attached to concrete blocks (Item 1)
4. Loose Masonry Fill - If all core spaces are filled with loose dry expanded slag, expanded clay or shale (rotary kiln process), water repellant vermiculite masonry fill insulation, or silicone treated perlite loose fill insulation add 2 hr to Classification.
5. Foamed Plastic* - (Optional - not shown) 1-1/2 in thick max, 4 ft wide sheathing attached to concrete blocks (Item 1).

Celotex Corp. - Type Thermax

*Bearing the UL Classification Marking

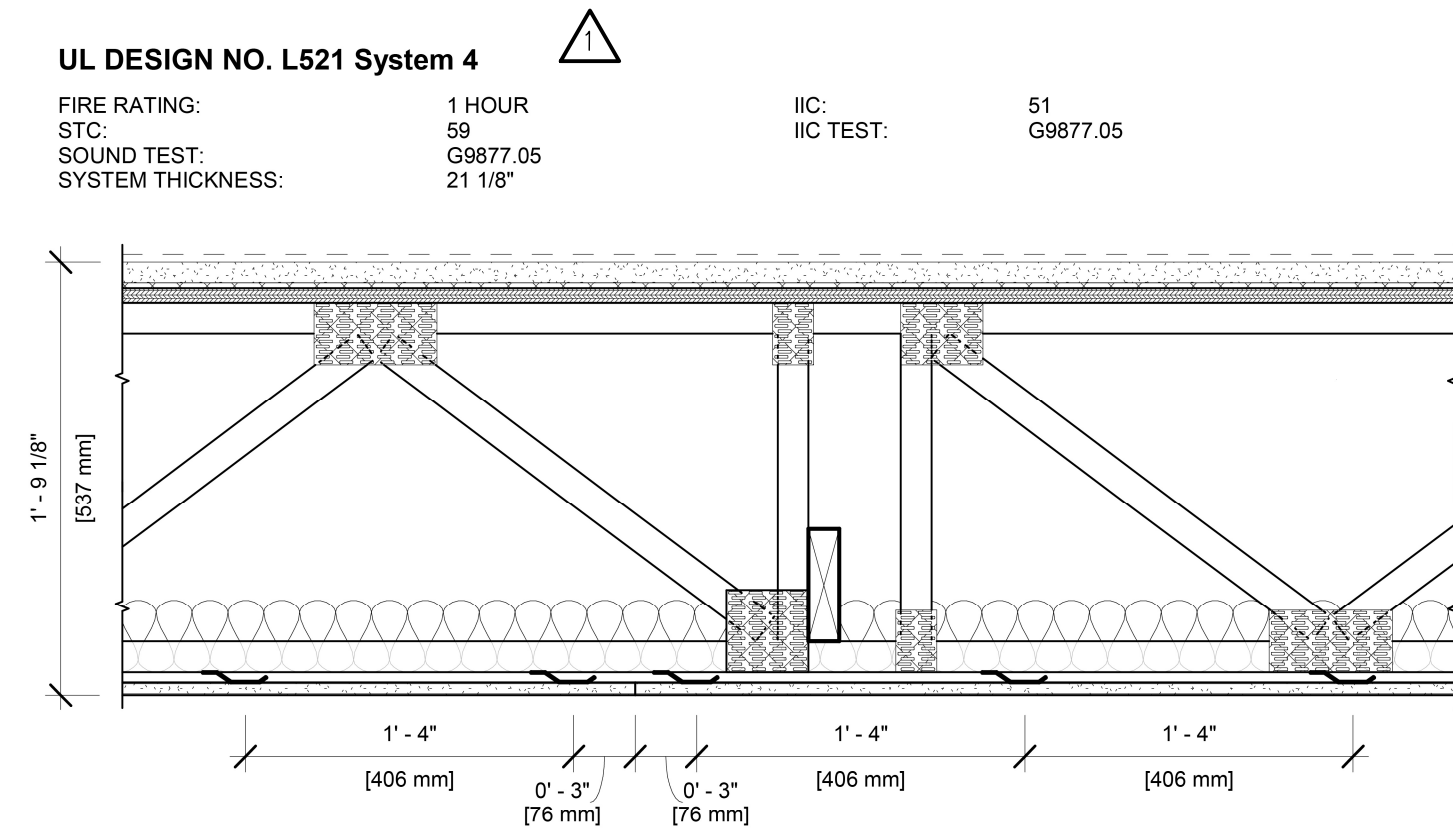


MAX. PIPE DIAMETER	PIPE COVERING THICKNESS	ANNULAR SPACE	FIRESTOP CONFIGURATION	"I" RATING
1"	NONE	3/16"	A	1 OR 2 HR
4"	NONE	3/16"	A	0 HR
4"	"	3/16"	C	1 OR 2 HR

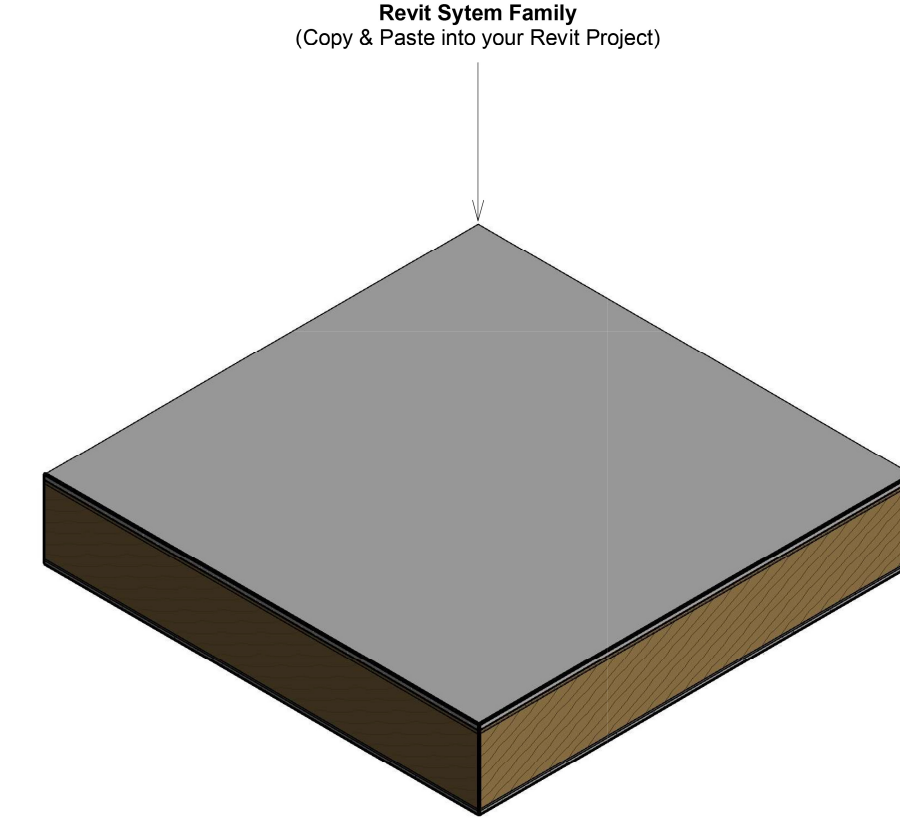
1
A3.1

PENETRATION THRU FIRE RATED PARTITION

WALL + PARTITION SCHEDULE	
W1	ONE LAYER OF 1/2" GYPSUM BD. ON 1X2 FT. WOOD FURRING @ 16" O.C. W/ R41 INSULATION ON INTERIOR AND 5/8" STUCCO ON EXTERIOR OF 8" CONCRETE BLOCK PER UL ASSEMBLIES U905
W2	ONE LAYER OF 1/2" GYPSUM BD. ON 1X2 FT. WOOD FURRING @ 16" O.C. W/ R41 INSULATION ON CONC. BLOCK SEE ADJACENT UNIT FOR FINISH ON OTHER SIDE-2HR TENANT SEP. WALL PER UL ASSEMBLIES U905
W3	ONE LAYER OF 1/2" GYPSUM BD. ON 1X2 FT. WOOD FURRING @ 16" O.C. W/ R41 INSULATION ON CONC. BLOCK SEE ADJACENT UNIT FOR FINISH ON OTHER SIDE-2HR TENANT SEP. WALL PER UL ASSEMBLIES U905
W4	1/8" STUCCO ON 1/32" CDX PLYUD. SHEETH ON EXTERIOR + 1/2" GYPSUM BOARD ON INTERIOR OF 2X8 WOOD STUDS @16" O.C. W/ R-11 BATT INSULATION
W5	ONE LAYER OF 5/8" TYPE 'X' GYPSUM BD. ON BOTH SIDES OF 2X6 STUDS @ 16" O.C./W-R-11 BATT. INSUL. AT GARAGE ONLY/ 1 HR GARAGE SEPARATION PER UL ASSEMBLY * LI 305 SEE SHEET A-15



- UL DESIGN NO. L521 System 4
- FIRE RATING: 1 HOUR
- STC: 59
- SOUND TEST: G9877.05
- SYSTEM THICKNESS: 21 1/8"
- IIC: 51
- IIC TEST: G9877.05
- ASSEMBLY
- FINISH FLOORING: CERAMIC TILE (BY OTHERS)
- FLOOR TOPPING MIXTURE: 1" THICK USG LEVELROCK® BRAND 2500 SERIES FLOOR UNDERLAYMENT
- FLOOR MAT MATERIALS: 1/4" USG LEVELROCK® BRAND SAM-N25™ SOUND ATTENUATION MAT
- SUBFLOORING: 23/32" PLYWOOD PANEL
- TRUSSES: 18" PARALLEL CHORD OPEN WEB WOOD TRUSSES, SPACED 24" O.C.
- CAVITY INSULATION: 3-1/2" UNFACED GLASS FIBER
- RESILIENT CHANNELS: 25 GA. RESILIENT CHANNELS SPACED 16" O.C. (SOUND TESTED WITH RC DELUXE™)
- GYPSUM BOARD: ONE LAYER 5/8" USG SHEETROCK® BRAND ECOSMART PANELS FIRECODE® X (UL TYPE ULX™)



NOTES:

FOR THE MOST UP-TO-DATE INFORMATION OR ASSEMBLY OPTIONS, REFER TO THE UL FIRE RESISTANCE DIRECTORY.

REFER TO THE UL FIRE RESISTANCE DIRECTORY FOR INFORMATION REGARDING PRODUCT ORIENTATION AND FASTENING REQUIREMENTS.

USG Corporation
550 West Adams Street
Chicago, IL 60601 USA
WWW.USG.COM
T: 800-USG4YOU

DISCLAIMER: THE USG PRODUCT INFORMATION CONTAINED HEREIN ARE INTENDED FOR USE AS PRODUCT INFORMATION ONLY. IT IS NOT A CONTRACT, SPECIFICATION, OR OTHER LEGAL INSTRUMENT. PROFESSIONALS MUST BE AWARE THAT THE INFORMATION CONTAINED HEREIN IS NOT A SUBSTITUTE FOR THE DESIGN PROFESSIONAL'S JUDGMENT AND USE OF PROFESSIONAL JUDGMENT IS REQUIRED TO DETERMINE THE APPROPRIATE USE OF THE INFORMATION CONTAINED HEREIN. USG MAKES NO WARRANTY, REPRESENTATION, OR GUARANTEE, EXPRESS OR IMPLIED, REGARDING THE ACCURACY, COMPLETENESS, OR RELIABILITY OF THE INFORMATION CONTAINED HEREIN. THE DESIGN PROFESSIONAL IS SOLELY RESPONSIBLE FOR THE DESIGN PROFESSIONAL'S USE OF THE INFORMATION CONTAINED HEREIN.

L521 System 4

ISSUE RECORD:

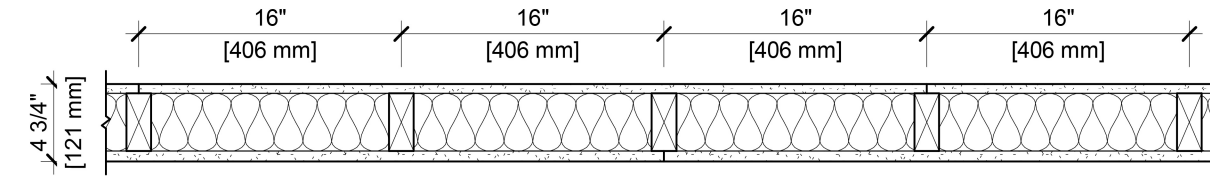
Revision Date

0 5.27.20

SHEET INFORMATION:

FC-WT-1-24

- DESIGN NO. UL U305
- FIRE RATING: 1 HOUR
- STC RATING: 34
- SOUND TEST: RAL-TL11-130
- SYSTEM THICKNESS: 4-3/4" [121 MM]
- LOCATION: INTERIOR
- FRAMING TYPE: WOOD STUD (LOAD-BEARING)



- ASSEMBLY REQUIREMENTS:
- GYPSUM PANELS: ONE LAYER 5/8" [15.9 MM] SHEETROCK® GYPSUM PANEL MOLD TOUGH® (UL TYPE SCX)
- WOOD STUDS: 2" X 4" [38 X 89 MM] WOOD STUDS, 16" [406 MM] O.C.
- INSULATION: 3-1/2" [89 MM] FIBERGLASS INSULATION
- GYPSUM PANELS: ONE LAYER 5/8" [15.9 MM] SHEETROCK® GYPSUM PANEL MOLD TOUGH® (UL TYPE SCX)

- GENERAL WALL NOTES:
- REFER TO APPLICABLE CODES REQUIREMENTS TO ENSURE COMPLIANCE PRIOR TO CONSTRUCTION.
 - FOR THE MOST UP-TO-DATE DETAILS, INCLUDING CONSTRUCTION VARIATIONS, REFER TO THE PUBLISHED DESIGN.
 - WHERE DESIGN NO. INDICATES "PER" THE FIRE RATING IS BASED ON LABORATORY TEST DATA OF THE REFERENCED SIMILARLY CONSTRUCTED ASSEMBLIES.
 - STUD SIZES AND INSULATION THICKNESS ARE MINIMUM UNLESS OTHERWISE STATED IN THE PUBLISHED ASSEMBLY.
 - STUD AND FASTENER SPACINGS ARE MAXIMUM UNLESS OTHERWISE STATED IN THE PUBLISHED ASSEMBLY.
 - PANEL ORIENTATION SHALL BE AS SPECIFIED IN THE PUBLISHED DESIGN.
 - FIRE-RATINGS ARE FROM BOTH SIDES UNLESS OTHERWISE STATED.
 - FIRE-RATINGS ARE MAINTAINED WITH ONE OR MORE OF THE FOLLOWING MODIFICATIONS: INCREASE STUD DEPTH, INCREASE STUD MATERIAL THICKNESS, DECREASE STUD SPACING, DECREASE FASTENER SPACING, INCREASE INSULATION THICKNESS UP TO CAVITY DEPTH.
 - WHERE ACOUSTICAL PERFORMANCE IS PROVIDED IN AN ESTIMATED RANGE, THE VALUES ARE BASED ON LABORATORY TEST DATA OF SIMILARLY CONSTRUCTED ASSEMBLIES.
 - SOUND-RATINGS ARE MAINTAINED WITH ONE OR MORE OF THE FOLLOWING MODIFICATIONS: INCREASE STUD DEPTH, DECREASE STUD MATERIAL THICKNESS, INCREASE STUD SPACING, INCREASE FASTENER SPACING, INCREASE INSULATION THICKNESS UP TO CAVITY DEPTH. MODIFICATIONS MUST NOT EXCEED LIMITATIONS OF FIRE RATING.

USG Corporation
550 West Adams Street
Chicago, IL 60601 USA
WWW.USG.COM
T: 800-USG4YOU

DISCLAIMER: THE USG PRODUCT INFORMATION CONTAINED HEREIN ARE INTENDED FOR USE AS PRODUCT INFORMATION ONLY. IT IS NOT A CONTRACT, SPECIFICATION, OR OTHER LEGAL INSTRUMENT. PROFESSIONALS MUST BE AWARE THAT THE INFORMATION CONTAINED HEREIN IS NOT A SUBSTITUTE FOR THE DESIGN PROFESSIONAL'S JUDGMENT AND USE OF PROFESSIONAL JUDGMENT IS REQUIRED TO DETERMINE THE APPROPRIATE USE OF THE INFORMATION CONTAINED HEREIN. USG MAKES NO WARRANTY, REPRESENTATION, OR GUARANTEE, EXPRESS OR IMPLIED, REGARDING THE ACCURACY, COMPLETENESS, OR RELIABILITY OF THE INFORMATION CONTAINED HEREIN. THE DESIGN PROFESSIONAL IS SOLELY RESPONSIBLE FOR THE DESIGN PROFESSIONAL'S USE OF THE INFORMATION CONTAINED HEREIN.

UL U305

ISSUE RECORD:

Revision Date

10/03/2021 11:56:12 PM

SHEET INFORMATION:

W-P-1-MR-02

CAG
ARCHITECTS, LLC.

CAG
ARCHITECTS, LLC.

FLORIDA CERTIFICATE #AR 0017819

406 S. NEPTUNE DRIVE,
SATELLITE BEACH, FLORIDA 32937
PHONE (321) 389-8787

© Copyright
All reports, plans, specifications, computer files, field data, notes and other documents are instruments of service prepared by CAG Architects, LLC (C.A.G.) as instruments of service remain the property of C.A.G. C.A.G. shall retain all common law, statutory and other reserved rights, including the copyright therein. Any use or reproduction of this document without written permission from C.A.G. is a violation of Federal copyright laws.

Archila
Design
GROUP
ARCHITECTURE

923 San Rafael Rd. SW
Palm Bay, FL 32909
PHONE: (561) 504-4240

1602 N. RIVERSIDE DR.
TRIPLEX
POMPANO BEACH, FL.
BROWARD COUNTY, FLORIDA

ARCHITECT SEAL

Kenneth R. Lebron
AR 0017819

FIRE RATED
ASSEMBLIES
LIFE SAFETY

Project Manager:
OSCAR
Drawn by: G.R.
Project No.: 24-925

10/03/2024
BLDG. COMMENTS 4/8/25

A-3.1